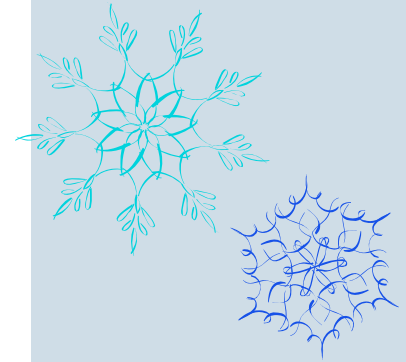




River Tower Shoreline Restoration Project design in progress funded by S.W.I.M. (SWFWMD)



Adaptive Management – A Basic Requirement of Life?

The term Adaptive Management was originally applied to ecological systems in the early 1980s, nearly 25 years ago. At SEA, we have been hearing this term a lot lately: while working on our projects, from our clients, and in conferences. In its simplest form, the Adaptive Management process implies the following:

Clarify Goals; Develop a Plan; Implement the Plan; Monitor its Progress; Analyze the Results; Use Results to Adapt and Learn; Develop New Plan

When we look at this process, we have to ask whether or not a fancy name has been created to represent something logical. Don't we all have to adapt and change in this same manner in our personal lives, in our professional lives, and in order to develop successful projects for clients? There are scientists that would argue that Adaptive Management is much more than just an effortless process of logic and common sense, but we hope for all of us that it truly is that simple and easy. We think the hard part may be guiding the outcome of this process, which requires initiating change.

The Associates at SEA have been practicing Adaptive Business Management since our inception in 1990, as every year we have survived and adapted to our own changes. In 2006, we grew from 30 to 38 employees, integrated new services, added a new office, and set our sights on the next 5 years. In getting all of this accomplished, we are proud of our professionals for their ability to adapt to change and their willingness to provide stimulating, progressive ideas to continuously make SEA better.

In pondering all the hope and promise that 2007 offers, we wish all of you continued success with the 'adaptive management' that is required for this highly-connected daily life. Here at SEA, we will strive to provide our treasured clients with a resourceful, flexible, adaptive approach to projects and the way we do business in order to best facilitate success.

Cheers to each of you in 2007,

Sandy and Thomas

Happy New Year!



New Faces in WPB together with Wendy for Holiday Luncheon.

New Faces in Tampa

Blake Meinecke
Brad Griffith
Corey Smolik
Joel Johnson
Keri Landry
Paige Peterson

Senior Scientist, Land Development Team Leader
Environmental Scientist
GIS Coordinator
Environmental Scientist
Environmental Scientist
Business Development & Marketing Manager

New Faces in West Palm Beach

Everglades Division of SFWMD, Everglades Landscape Processes Group

Chip Day
Erik Sindhoj, PhD
Fabiola Santamaria
Manuel Tapia

Environmental Scientist, Tree Island Research
Senior Research Scientist
Environmental Scientist, Ridge and Slough Research
Environmental Scientist, Water Quality Research

Acceler8 Division of SFWMD

Hope Konyha

Administrative Support

SEA's West Palm Beach Office

Sara Neugaard

Environmental Scientist

Treasured and Tenured (far from new)

Dianne Rosensweig, Senior Scientist, 15 years!
Karen Young, Senior Project Administrator, 11 years!
Kathy Noullet, Tech-Design Team Leader, 9 years!
Wendy Sotera, West Palm Beach Branch Manager, 8 years!
Guy Murtonen, Landscape Contracts Manager for Florida's Turnpike, 6 years!

New Office

In March of 2006, SEA opened a new office in Sarasota.

Community Service

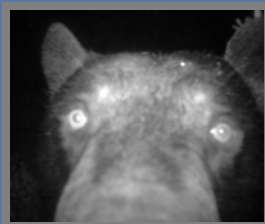
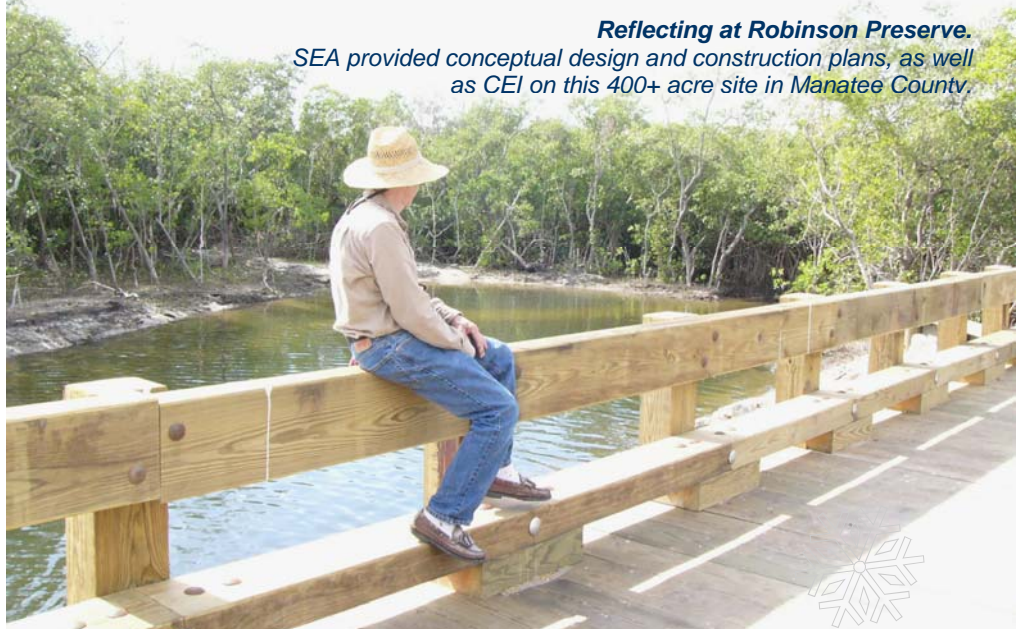
This year, many of SEA's staff and their families participated in various community service events including volunteer plantings at Robinson Preserve and Tampa Shoreline Restoration Initiative, to name a few. Our folks were also present for Sea Turtle Nest Watch on Pinellas County beaches, and the Mayor's Annual Hillsborough River Clean-Up.

In addition, we raised \$1,000 through various events which will be donated to The Learning Gate, a Lutz, Florida charter school that places the environment as the focal point for their curriculum.

Finally, in lieu of sending holiday greeting cards to our clients, SEA has donated \$500 for children in need at Joshua House. Operated by the Children's Home Society of Florida, Joshua House provides emergency shelter and residential care services for abused, abandoned and neglected children.

Reflecting at Robinson Preserve.

SEA provided conceptual design and construction plans, as well as CEI on this 400+ acre site in Manatee County.



Florida Black Bear discovers wildlife monitoring camera along SR 29.