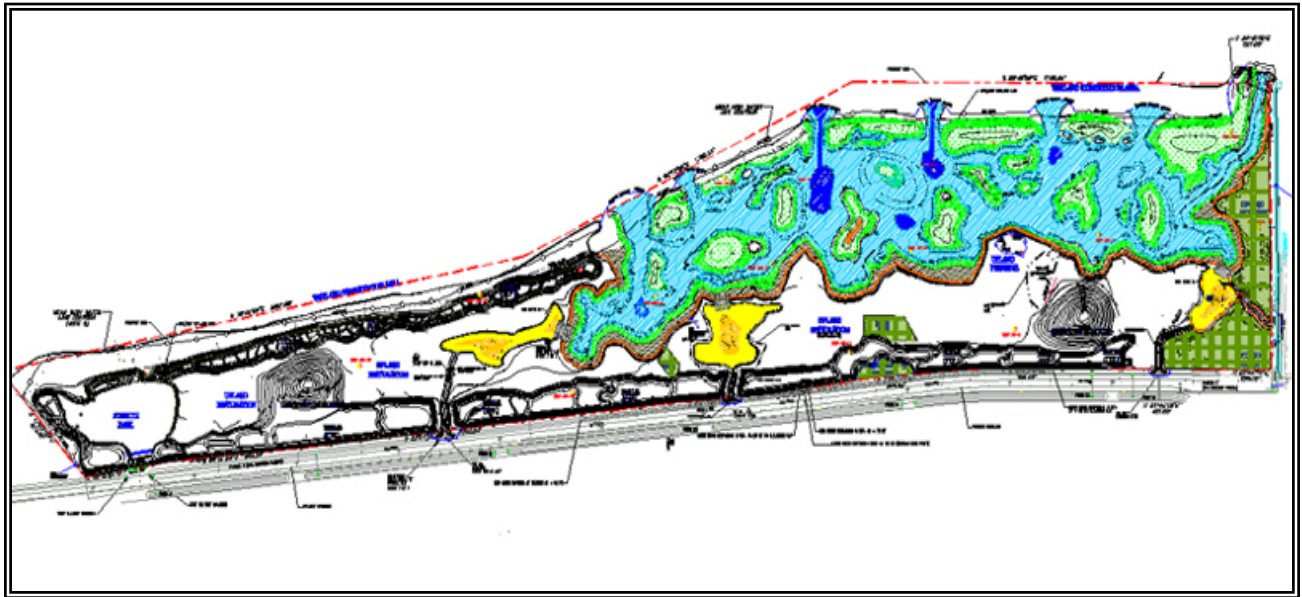


SHULTZ PARK NATURE PRESERVE HABITAT RESTORATION PROJECT

Hillsborough County, Florida



DESCRIPTION OF PROJECT

Scheda scientists completed habitat restoration design and construction inspection services at Port Redwing for the Southwest Florida Water Management District's Surface Water Improvement and Management (SWIM) Program. SWIM is developing a series of projects throughout the Tampa Bay area focusing on intertidal and oligohaline habitat restoration/creation. Scheda completed design plans for the 120-acre Port Redwing site in west-central Hillsborough County. This site involved the restoration and enhancement of a man-made peninsula in Tampa Bay. Project objectives included restoring a large portion of the site as a productive intertidal wetland, and creating a native upland ecosystem. The approved restoration design restored 55 acres of intertidal estuarine habitat and 45 acres of productive upland habitat. In addition, three isolated freshwater ponds (6 acres) were designed to drive a salinity gradient in the estuarine systems, thereby increasing the restoration design diversity. The upland restoration areas provide coastal hammocks, xeric and mesic habitats, and pine flatwood communities. All of the habitat types have been planted with native plant species to mimic Florida ecosystems.

